

# WEEK 1



## YOUR SCHOOL MENU

NOVEMBER 2024 – APRIL 2025



Hampshire  
County Council

Education Catering

Fresh vegetables will change seasonally and may not be shown in the photo.

### MONDAY

CHOOSE FROM  
Veggie bolognaise pasta **Vg**



Chicken Katsu curry and rice



ON THE SIDE  
Vegetables or salad

TO FINISH  
Shortbread

### TUESDAY

CHOOSE FROM  
Vegetarian sausage roll with  
crinkle cut wedges **V**



Ham carbonara with pasta



ON THE SIDE  
Vegetables or salad

TO FINISH  
Fruit, mousse or jelly

### WEDNESDAY

CHOOSE FROM  
Cheese and tomato pizza **V**



Sweet sticky chicken with rice



ON THE SIDE  
Vegetables or salad

TO FINISH  
Rice crispy cake

### THURSDAY

CHOOSE FROM  
Plant-based sausage and  
Yorkshire pudding **V**



Sliced beef and Yorkshire  
pudding



ON THE SIDE  
Roast potatoes, gravy and  
vegetables

TO FINISH  
Fruit, mousse or jelly

### FRIDAY

CHOOSE FROM  
Cheese and onion quiche **V**



Fish fingers



ON THE SIDE  
Chips, vegetables or salad

TO FINISH  
Sticky ginger sponge

FRESH  
FRUIT  
SERVED  
EVERY DAY

WEEK STARTING:

4 November, 25 November, 16 December,  
20 January, 10 February, 10 March, 31 March

FOOD TO  
FLOURISH®



[hants.gov.uk/educationcatering](https://hants.gov.uk/educationcatering)

All menu items are subject to change, based upon availability and in the event of unforeseen circumstances.

**V** Vegetarian

**Vg** Vegan

# WEEK 2



## YOUR SCHOOL MENU

NOVEMBER 2024 – APRIL 2025



Hampshire County Council

Education Catering

Fresh vegetables will change seasonally and may not be shown in the photo.

### MONDAY

**CHOOSE FROM**  
Plant-based sausage hotdog and diced potatoes **Vg**



Chicken curry and rice



**ON THE SIDE**  
Vegetables or salad

**TO FINISH**  
Goosey chocolate pudding

### TUESDAY

**CHOOSE FROM**  
Veggie lasagne **V**



Pork sausages with mash and gravy



**ON THE SIDE**  
Vegetables or salad

**TO FINISH**  
Fruit, mousse or jelly

### WEDNESDAY

**CHOOSE FROM**  
Cheese and tomato pizza **V**



Bubble salmon and crinkle cut wedges



**ON THE SIDE**  
Vegetables or salad

**TO FINISH**  
Chewy honey cookie

### THURSDAY

**CHOOSE FROM**  
Quorn pieces in a Yorkshire pudding **V**



Sliced chicken and Yorkshire pudding



**ON THE SIDE**  
Roast potatoes, gravy and vegetables

**TO FINISH**  
Fruit, mousse or jelly

### FRIDAY

**CHOOSE FROM**  
Sweet potato and lentil curry and rice



Fish fingers and chips



**ON THE SIDE**  
Vegetables or salad

**TO FINISH**  
Lemon drizzle sponge

**FRESH FRUIT SERVED EVERY DAY**

**WEEK STARTING:**

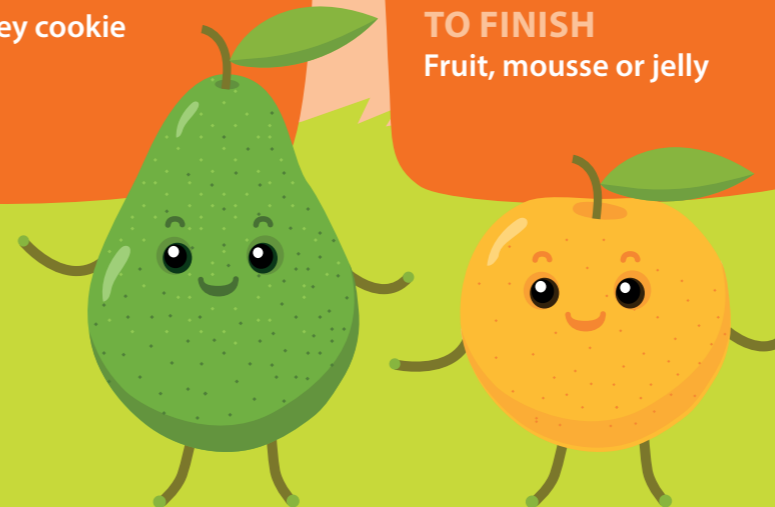
11 November, 2 December, 6 January, 27 January, 24 February, 17 March

**FOOD TO FLOURISH®**

[hants.gov.uk/educationcatering](https://hants.gov.uk/educationcatering)

All menu items are subject to change, based upon availability and in the event of unforeseen circumstances.

**V** Vegetarian  
**Vg** Vegan



# WEEK 3



## YOUR SCHOOL MENU

NOVEMBER 2024 – APRIL 2025



Hampshire  
County Council

Education Catering

Fresh vegetables will change seasonally and may not be shown in the photo.

### MONDAY

CHOOSE FROM  
Macaroni cheese 



Beef chilli with rice and  
tortilla chips



ON THE SIDE  
Vegetables or salad

TO FINISH  
Chocolate brownie

### TUESDAY

CHOOSE FROM  
Veggie cottage pie 



Chicken nuggets and  
diced potatoes



ON THE SIDE  
Vegetables or salad

TO FINISH  
Fruit, mousse or jelly

### WEDNESDAY

CHOOSE FROM  
Vegetable and bean burrito 



Tangy BBQ sauce pizza topped  
with chicken



ON THE SIDE  
Vegetables or salad

TO FINISH  
Jammy shortbread biscuit

### THURSDAY

CHOOSE FROM  
Quorn and leek pastry crown 



Sliced pork and Yorkshire  
pudding



ON THE SIDE  
Roast potatoes, gravy and  
vegetables

TO FINISH  
Fruit, mousse or jelly

### FRIDAY

CHOOSE FROM  
Cheese and potato frittata 



Fish fingers



ON THE SIDE  
Chips, vegetables or salad

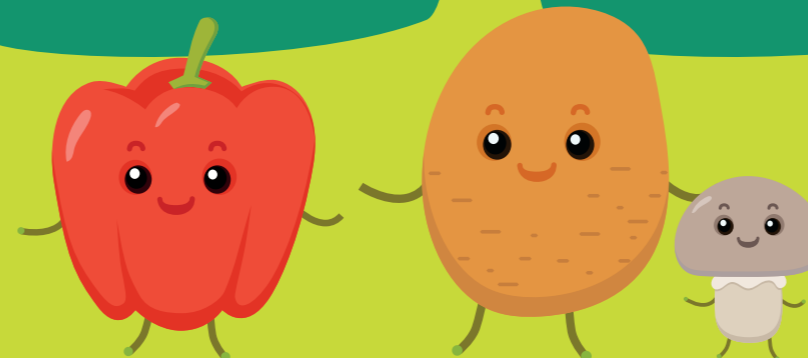
TO FINISH  
Toffee apple sponge

FRESH  
FRUIT  
SERVED  
EVERY DAY

WEEK STARTING:


18 November, 9 December, 13 January,  
3 February, 3 March, 24 March

FOOD TO  
FLOURISH®



All menu items are subject to change, based upon availability and in the event of unforeseen circumstances.

[hants.gov.uk/educationcatering](https://hants.gov.uk/educationcatering)

 Vegetarian

 Vegan